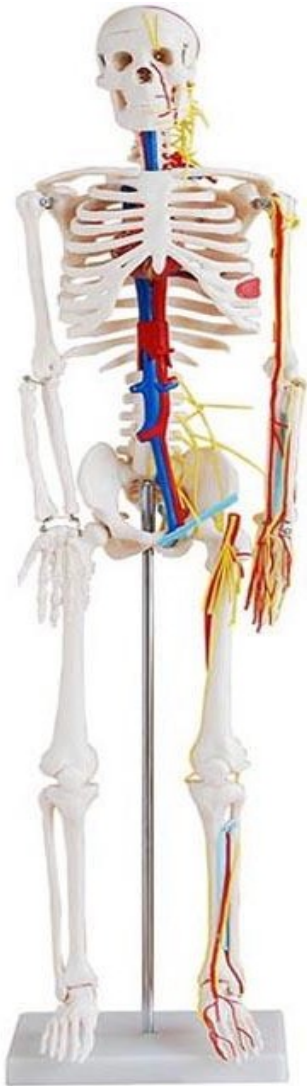


XC-102B 85cm Skeleton with Nerves and Blood Vessels



1. **Size:** The "85cm" in the product name likely refers to the height of the skeleton. An 85 cm tall skeleton would be relatively small, suitable for educational purposes.
2. **Skeleton Structure:** The skeleton would include the major bones of the human body, such as the skull, vertebrae, ribs, pelvis, arms, and legs.
3. **Nerves:** If the skeleton includes nerves, it may have a nervous system model integrated into it, demonstrating the network of nerves that run throughout the body.
4. **Blood Vessels:** The presence of blood vessels could indicate a circulatory system model, showing the major arteries and veins in the body.
5. **Material:** These models are typically made of durable, high-quality materials like PVC or plastic to withstand handling and educational use.
6. **Anatomical Detail:** The skeleton model should be anatomically accurate, with proper labeling of bones, nerves, and blood vessels.
7. **Mounting:** Some skeleton models come with a stand or mount for display and educational purposes.
8. **Educational Use:** These models are often used in medical, nursing, and anatomical education for the study of human anatomy.