

BONES & SKELETON MODELS



ZX-1204

ZX-1204 Miniature Skull Model PVC

- 9.75x7x11 cm
- Made of PVC
- Dissectable in 3 parts
- Bonnet can be removed, Mandible is movable. The foramen & fossa are present.
- Key card / Manual provided.

NEW



ZX-1209P

ZX-1209P Didactic Miniature Skull 15 Parts

- 10x9x13 cm
- Made of PVC
- Consists of 15 parts.
- Suture of each bone is equipped with magnets to assemble easily. All the bones are depicted in different colours, making this model a useful tool to study the correct position and the relationship of all the structures.
- Key card / Manual provided.

NEW

ZX-1207 Skull 5 yr old Child PVC



ZX-1207

- Life size
- Made of PVC
- Bonnet can be removed, Mandible is movable & all skull foramina, fissures, processes are well depicted.
- Teeth are separately installed, same as real one, in ceramic white color.
- Key card / Manual provided.

NEW

ZX-1201 Human Fetal Skull



ZX-1201

- Life size
- Made of HSP resin
- Movable lower jaw.
- Showing incomplete ossification of skull bones, fontanelles, frontal and parietal eminences, various skull bones like occipital, temporal, sphenoid, frontal, mandible & maxilla.
- 41 features marked.
- Key card / Manual provided.



ZX-1206A

ZX-1206A Full Term Fetus Skull Model with Stand

- Life size
- Made of PVC
- Long durability
- Key card / Manual provided.

NEW



GD/A11115

GD/A11115 Infant Skull

- Material: Advanced PVC.

BUILD YOUR ANATOMY MODELS

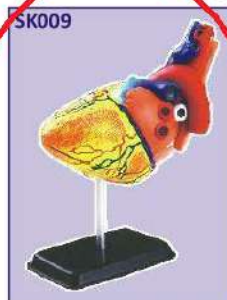
- New Type of Puzzle
- Highly Detailed Finish
- Collectible Quality
- Dissectable in Small Parts
- Display Stand



SK007

SK007 Eyeball Anatomy Model

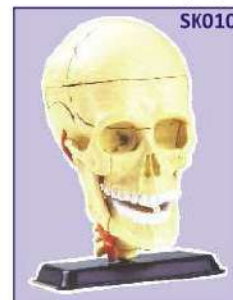
- Size 14 cm
- 35 pieces set.



SK009

SK009 Heart Anatomy Model

- Size 14 cm
- 31 pieces set.



SK010

SK010 Cranial Nerve Skull Anatomy Model

- Size 9 cm
- 39 pieces set.

(A) - GST @18% is included in the price.

N-10