

GYNAE & OBSTETRIC MODELS

ZX-1441PN



ZX-1441PN Female Uterus Ovary Model

- Life size
- Made of PVC
- It shows sectioned vagina, cervix, uterus, fallopian tubes and ovary with follicles at various stages of development.
- Mounted on a Stand.
- 23 features marked.
- Key card / Manual provided.

ZX-1516P Uterus & Ovary Pathologies Model

ZX-1516P



- Life size
- Made of PVC
- It shows normal anatomy & diseases of female reproductive system.
- Diseases shown include endometriosis, adenomyosis, adhesions, various carcinomas, polyps, cysts, pendunculated fibroid tumor, salpingitis and fibroids.
- Mounted on a Base.
- Key card / Manual provided.

ZX-1712PN



ZX-1712PN Human Fertilization and Embryogeny Model

- Size : 61x46x16.5 cm
- Made of PVC
- Shows the development from sperm and ovum to the fetus in third month via 16 different models.
- 16 features marked in model of placental section.
- Key card / Manual provided.

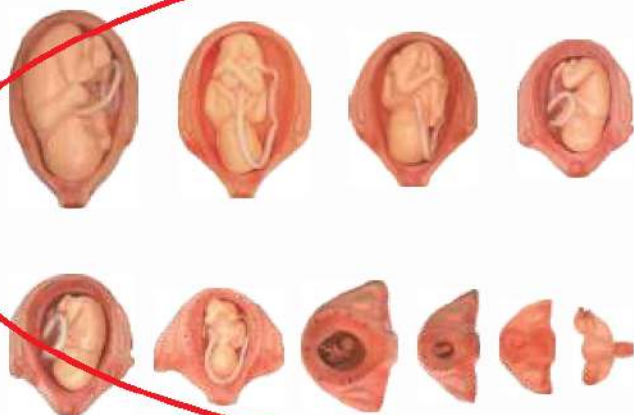
GD/A42002



GD/A42002 Human Fertilization and Early Embryogeny

- Shows the development from ovum to the fetus in third month.
- 16 positions are displayed.
- Material: Advanced PVC.

XC-414



XC-414 The Development Process of Fetus

- Made of PVC and synthetic rubber.
- The model consist of 10 parts and shows the relationship between fetus and Uterus during the gestation period.

Part No.	Gestation Month	Appearance/Height of Fetus
• 1st	Normal Uterus	Inner genitals
• 2nd	First	Placenta is shown
• 3rd	Second	Embryo looks like human
• 4th	Third	Fetus is about 9 cm
• 5th	Fourth	Fetus is about 16 cm
• 6th	Fifth	Fetus is about 25 cm
• 7th	Sixth	Fetus is about 30 cm
• 8th	Seventh	Fetus is about 35 cm
• 9th	Eighth	Fetus is about 40 cm
• 10th	Ninth	Fetus is about 45 cm