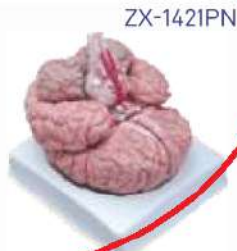


BRAIN & NERVOUS SYSTEM

ZX-1421PN Brain Model Deluxe 9 Parts

- Life size • Made of PVC • Dissectable in 9 parts. On base
- Model can be disassembled into the temporal and occipital lobes, the frontal and parietal lobes, the cerebellum, the brain stem and circle of willis & basilar artery.
- All structures, including blood vessels, are shown in great detail
- Model pieces are held together with magnets & pegs
- 41 features marked.



XC-308 Brain with Arteries

- Made of PVC plastic.
- Dissectable into 8 parts. On base.
- Natural size: 18.5 x 14 x 13.5 cm.
- Facilitates a correct understanding of the features of the brain and its arterial supply as a whole, Relations between their component portions.
- External features of the brain: cerebral hemisphere, brain stem, cerebellum.
- The arterial supply of the brain: sources, vertebral, internal carotid arteries, arterial supply of the cerebellum and cerebrum.



ZX-1422PN

ZX-1422PN

Brain Model Deluxe Enlarged 4 parts

- Size: 1.5 times enlarged • Made of PVC
- Dissectable in 4 parts
- Showing the temporal and occipital lobes, the frontal & parietal lobes, the cerebellum, the brain stem in different colors.
- Mounted on metal stand with wooden base.
- 142 features labeled & relevant descriptive names written directly on model.
- Key card / Manual provided.



XC-318 Brain with Arteries on Head

XC-318

- This model shows the brain structure inside the skull. Two halves of brain can be disassembled into: frontal with parietal lobes, temporal with occipital lobes, half of brain stem, half of cerebellum.
- Life size
- Dissectable into 9 parts.



ZX-1438PN Brain Stem Model, Enlarged

ZX-1438PN

- Size: 2.5 times enlarged • Made of PVC
- Dissectable in 2 parts. • 67 parts labeled in total.
- It shows the structure of the brainstem, such as midbrain, pons, medulla and cerebral nerves, etc.
- Ideal for advanced anatomical study by neurological students as well as patient demonstration.
- Great for studying human development and having as a desktop model for quick reference and to educate patients.
- Key card / Manual provided.



ZX-1612PN



ZX-1612PN

Spinal Cord and Nerve Branches

- Size: 8 times enlarged
- Made of PVC • Mounted on board.
- 21 parts labeled in total.
- It shows the detail of the anterior and posterior nerve roots with additional depiction of the spinal ganglion.
- Displayed both longitudinally and in cross section.
- Key card / Manual provided.

ZX-1610E Reflex Arc

- 30x40x3 cm. • Made of HSP resin
- The model shows sensory, neural & motor elements of a complete reflex arc.
- Mounted on sturdy wooden base.
- 22 features marked.
- Key card / Manual provided.



GD/A 18102 Spinal Cord in the Spinal Canal

- Mounted on board. • Shows 47 positions. • Made of Advanced PVC.
- Shows ventral side, brain stem and spinal cord.
- Branches up to the coccygeal plexus, sympathetic trunk with its connection to the central nervous system.

