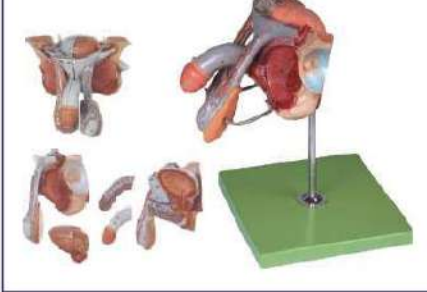


## REPRODUCTIVE SYSTEM

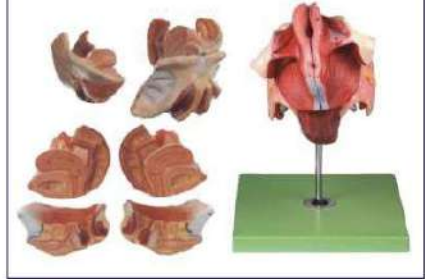
GD/A15102



GD/A15102

- Price Rs. 15694.00 (A)
- Dissected in median and mounted on a stand.
- Shows the penis, prostate, bladder, seminal vesicle, spermatic cord & inguinal canal & base.
- Shows 72 positions.
- Made of Advanced PVC.

GD/A15105



GD/A15105

Female Genital Organs

- Dissected and mounted on a stand.
- Shows internal and external female genital organs.
- Shows 40 positions.
- Model consists of 4 parts.
- Made of Advanced PVC.

GD/F9B

GD/F9B Female Contraception Practice Simulator



- Imported material, high-quality and environmental protection.
- Simulated anteversion uterus, fallopian tubes, labium, vagina and transparent abdominal wall cover in the pelvic cavity.
- Expansion of vagina, the use of vaginal speculum, operation of female condom, contraceptive sponge and cervical cap.

GD/F5M

Male Condom Model



- The model is designed for male condom skill training.
- The model is mounted on a Lucite stand.
- The anatomy is accurate and the shape is realistic.

ZX-1412

ZX-1412

Male Condom Training Model



- 14.5x 14.5 x 20 cm.
- Made of HSP resin
- The model is designed for male condom skill training.
- Model is supplied with one spare condom.

GD/F5M

## GYNAE & OBSTETRIC MODELS

XC-332B



XC-332B Human Female Pelvis Section (4 parts)

- This median section models shows normal position of child before birth.
- Removable fetus.
- Made of PVC plastic.
- Size : 38 x 25 x 40 cm.

GD/A41003



GD/A41003 Ovary Model

- Consists of 8 parts, mounted on stand.
- Shows ovary, primary and secondary ovarian follicles, ovum, ovulation, ovum, corpus luteum, corpus albicans.
- It demonstrates the procedure of ovum's development.
- Shows 10 positions. • Made of Advanced PVC.

ZX-1515P Breast Pathologies Model

- Life size • Mounted on base.
- This cross-sectional breast model depicts common pathologies such as adenocarcinoma, cysts, fibroadenoma and infiltrating scirrhous carcinoma.
- It also shows breast structures such as suspensory ligaments, fat tissue, lymph nodes, muscles, and ribs.
- Key card / Manual provided.

ZX-1515P



NEW