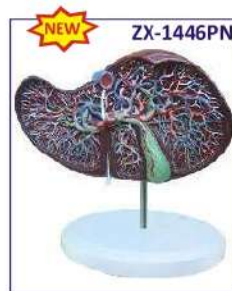


DIGESTIVE SYSTEM



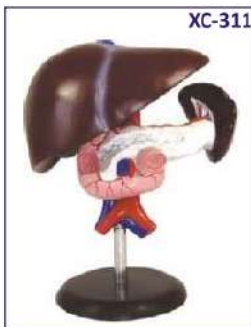
ZX-1416PN
Liver Model PVC

- Life size
- Made of PVC
- Model shows lobulation, liver ligaments, portal structure, gallbladder, bile duct system.
- Mounted on base.
- 8 features marked.
- Key card / Manual provided.



ZX-1446PN
Liver Section & Gallbladder

- Life size
- Made of PVC
- Model shown liver and gallbladder in open section to expose the complex internal network of arteries, veins and bile ducts.
- Model is displayed in bright different colors for clarity and ease of examination.
- Mounted on base with stand.
- 17 features marked.
- Key card / Manual provided.



XC-311
Liver, Pancreas & Duodenum Model

- To study the basic structure of the liver, spleen, blood vessels and pancreas.
- External structure are illustrated as well as the pancreatic duct of the pancreas.
- This model also shows the abdominal aorta & inferior vena cava.
- Life-size. Dissectible into 3 parts.
- Made of PVC. Size: 23 x 12.5 x 26 cm.



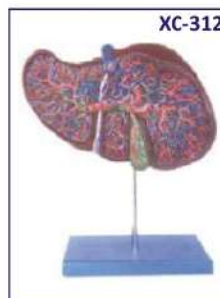
ZX-1518P Pancreatic Region Pathology Model

- Life size
- Made of PVC
- Model shows cancer of pancreas, gallbladder with stones, peptic ulcer of duodenal wall and ruptured spleen.
- Mounted on base with stand.
- Key card / Manual provided.



ZX-1408 Stomach

- 17x16x25 cm.
- Made of HSP resin
- Dissectible in 2 parts.
- It shows different muscle layers of stomach wall.
- Model shows lower esophagus, vessels and nerves.
- Mounted on stand with base.
- 36 features marked.
- Key card / Manual provided.



XC-312 Liver Model

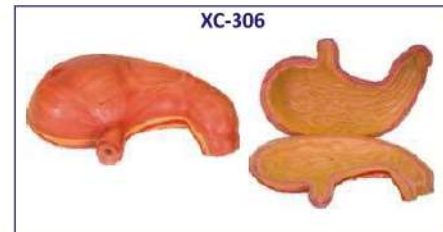
- An economical way to study the basic structure of the liver.
- The complex vessels network in the opened liver, displayed in different colors on this model : hilus vessels, extra-hepatic and intra-hepatic bile ducts. Liver mounted on stand.

ZX-1402 Human Stomach, Pancreas & Duodenum



ZX-1402

- 20x15x10 cm
- Made of HSP resin
- It shows layers of stomach wall.
- Dissectible in 3 parts.
- Model depicts lower esophagus, associated blood vessels and sectioned duodenum and pancreas (revealing large ducts up to its aperture).
- Mounted on stand with base.
- 70 features marked.
- Key card / Manual provided.



XC-306 Stomach Model

- Made of hard plastic
- Magnified 2 times the natural size
- Shows the morphology of the stomach in a distended state.
- With the longitudinal section, the model shows the structures of the gastric folds, pyloric valve, pyloric sphincter muscles, gastric mucosa and the transitional mucosa of the gastric-esophagus.