

# E.N.T. MODELS

## ZX-1437PN Cavities of Nose, Mouth, Throat, Enlarged

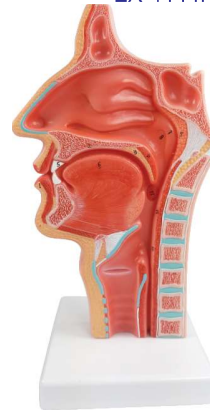
ZX-1437PN



- Size : 2 times enlarged
- Made of PVC
- Dissectable in 10 part
- Mounted on base
- 160 parts labeled in total
- Detailed model showing muscles, cartilage, or bones of the human head. The removable larynx also helps users get a closer look at the tongue and lingual tonsil with brightly colored arteries and textured muscles.
- Well illustrated and informative.
- Beautifully painted in bright colors.
- Model is accurately made from actual specimen references, photographs and encyclopedia reference under expert guidance.
- Key card / Manual provided.

ZX-1444PN

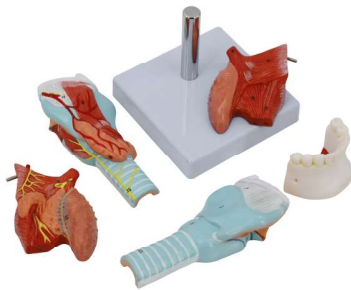
## ZX-1444PN Nasal Oral Cavity Model, Sagittal Section



- Life size
- Made of PVC
- This model shows the interior parts of nasal cavity, oral cavity, throat and pharynx.
- Sagittal section
- Mounted on base.
- 12 features marked.
- Key card / Manual provided.

ZX-1423PN

## ZX-1423PN Human Tongue and Larynx Model 5 Parts



- Natural size
- Made of PVC
- Dissectable in 5 parts.
- Mounted on base.
- 49 features marked.
- Key card / Manual provided.
- The model consists of median

sagittal section of the larynx, the laryngeal ligament & cartilage, the base of the tongue, thyroid gland and the part of mandible with teeth.

## COMMUNITY HEALTH BAG (CHB)



### PRODUCT CONSISTING IN THE BAG:

1. SPIRIT LAMP
2. TEST TUBE HOLDER
3. TEST TUBE 5"
4. KIDNEY TRAYS 6" STAINLESS STEEL
5. SYRINGE 5ML
6. STETHOSCOPE
7. FEOTOSCOPE
8. SUTURE CUTTING SCISSOR
9. DRESSING SCISSOR (BIG) 6"
10. FORCEP TOOTHED 6"
11. FORCEP NON TOOTHED 5"
12. ARTERY FORCEP (STRAIGHT) 6.5"
13. THERMOMETER CLINICAL
14. SPRING BALANCE
15. TOWEL
16. MEASURING TAPE
17. SOAP DISH
18. NAIL BRUSH
19. DROPPER
20. SMALL BOWL