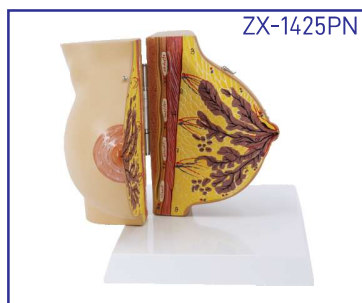
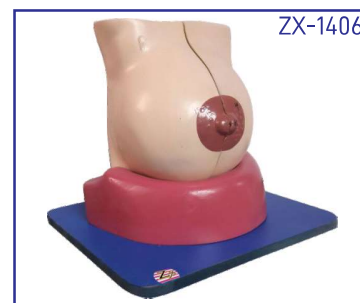


# GYNAE & OBSTETRIC MODELS



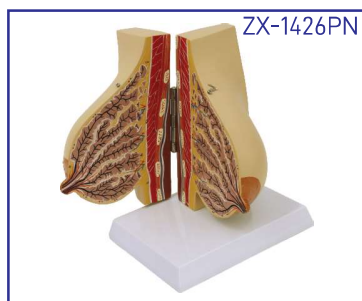
**ZX-1425PN Female Breast Model Deluxe**

- Size: Life size • Made of PVC
- This model opens in half to display all internal structure of a female breast
- It is able to stay close by a metal hook
- Mounted on base
- 12 features marked.
- Key card / Manual provided.



**ZX-1406 Female Breast Model**

- Life size • Made of HSP resin
- Model on stand shows a female breast in quiescent period.
- Model is medially divided into 2 halves.
- 16 features marked.
- Key card / Manual provided.



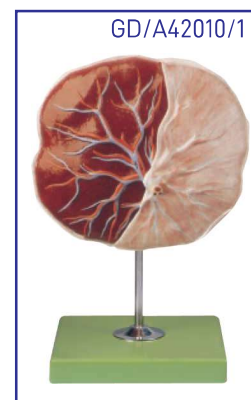
**ZX-1426PN Female Breast Model Dx. During Lactation**

- Size: Life size • Made of PVC
- This model opens in half to display all internal structures of a female breast during lactation
- It is able to stay closed by a metal hook
- Mounted on base
- 12 features marked.
- Key card / Manual provided.

**ZX-1700PN Human Placenta Model with Cord**



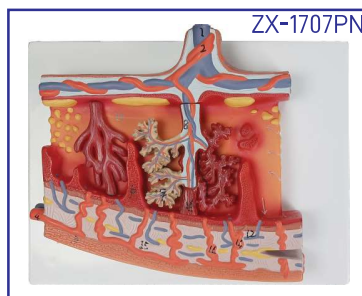
- Size: Life size • Made of PVC
- It shows structure of placenta from maternal & fetal side both.
- It also shows the relation between placenta and umbilical cord.
- Umbilical cord clearly shows umbilical vessels
- Maternal side: shows dark maroon structure of the decidua featuring the cotyledons
- Fetal side: reveals the amnion (amniotic membrane) partially removed, exposing the intervillous space.
- 8 features marked. • Key card / Manual provided.



**GD/A42010/1 Human Placenta**

- Mounted on stand.
- Made of Advanced PVC.
- Shows the structure of placenta and the relation between placenta and umbilical cord.
- 7 positions are displayed.

**ZX-1707PN Placenta Section Model, Enlarged**



- Size: 13x13x2 cm • Made of PVC
- 16 parts labeled in total. • Mounted on stand
- The anatomical structures of the human placenta in a cross-section view.
- Useful to learn about how the placenta works to provide nutrition, oxygen and blood and how it helps in waste elimination between a developing fetus & the uterine wall.
- Key card / Manual provided.



**ZX-1706PN Human Embryo Model, Enlarged (Four weeks old)**

- Size: 25 times enlarged • Made of PVC
- 20 parts labeled in total.
- Well illustrated and informative.
- Great for studying human development and having as a desktop model for quick reference and for education.
- Key card / Manual provided.



**GD/A42004 Embryo Model**

- Mounted on stand.
- Made of Advanced PVC.
- 4 weeks old embryo.
- Shows 12 positions.