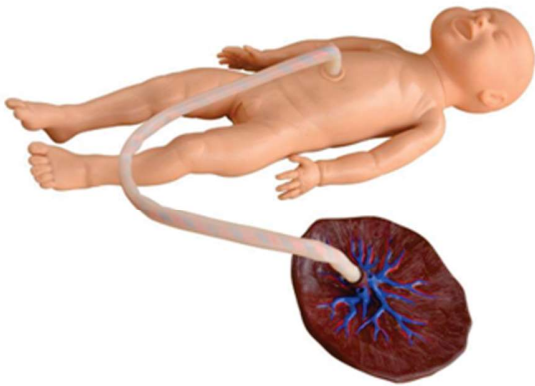


## XC-409C Advanced Neonate Umbilical Cord Nursing Model



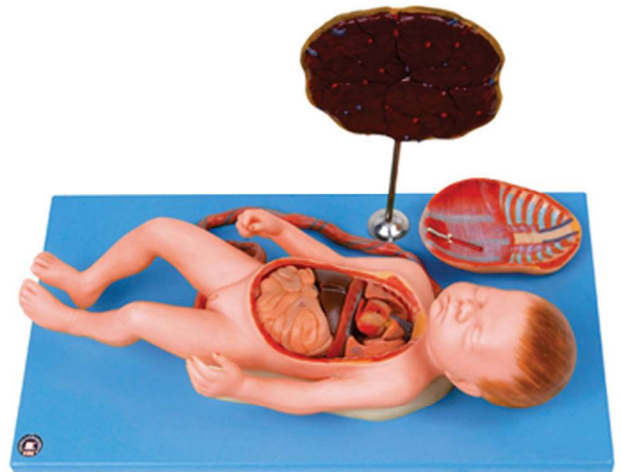
### Description:

- 1) Female newborn systemic model, moveable head and limbs
- 2) Realistic umbilical cord with umbilical vein and artery
- 3) Umbilical cord ligation and nursing, realistic touch feeling, the enough length of umbilical cord can be used continually
- 4) Neonatal basic nursing: lactation, sponge washing, wearing clothes, changing diapers.

## GD/A42008 Fetus with Viscus and Placenta

### • Made of Advanced PVC.

- Shows a female fetus at the end of the pregnancy with placenta and umbilical cord.
- Separated into 13 parts as follow: Placenta, umbilical cord, abdominal cover, lungs, heart, thymus, diaphragm, liver, stomach, intestine, body.



## GD/F7A Breast Examination Model



### Features:

Functional Characteristics: Palpation of galactophore malignant tumor, innocent tumor, lymphaden and lobulusaccrementition; Material Characteristics:

1. Made of Advanced thermoplastic;
2. Life like shape, skinny, pleasant to touch, durable. Ametabolic under disinfections and cleanout, convenient delivery.