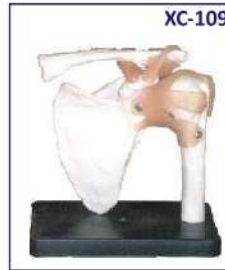


JOINTS OF THE BODY



**ZX-S109**  
**Shoulder Joint Model Flexible**

- Life size
- Made of PVC
- Show shoulder joint abduction, adduction, forward tilt, backward tilt and inward/outward rotation.
- It is constructed with flexible plastic ligaments.
- Mounted on a plastic base.
- Key card / Manual provided.



**XC-109**  
**Shoulder Joint**

- Size: 16 × 12.5 × 20cm. Life size.
- Ball and socket joint.
- To illustrate abduction, adduction, anteversion, retroversion and internal/external rotation.
- Includes flexible artificial ligaments.



**ZX-S110**  
**Hip Joint Model Flexible**

- Life size
- Made of PVC
- Accurate representation of the hip joint and its ligaments.
- It is constructed with flexible plastic ligaments.
- Mounted on a plastic base.
- Key card / Manual provided.



**XC-110**  
**Hip Joint**

- Life size, on stand.
- Ball and socket joint
- Demonstrates anteversion, retroversion, abduction & internal/external rotation. Includes flexible, artificial ligaments.



**ZX-S111**  
**Knee Joint Model Flexible**

- Life size
- Made of PVC
- Model represents a functional model of knee joint with lateral ligaments, meniscus and patellar ligament.
- It is constructed with flexible plastic ligaments.
- Mounted on a plastic base.
- Key card / Manual provided.



**XC-111**  
**Knee Joint**

- Size: 12.5 × 12.5 × 32cm.
- Hinge joint.
- Life size, on stand.
- Demonstrates flexion, extension, and internal/ external rotation. Includes flexible, artificial ligaments.



**ZX-S112**  
**Elbow Joint Model Flexible**

- Life size
- Made of PVC
- It consists of lower part of humerus bone and upper part of radius and ulna bones.
- It is constructed with flexible plastic ligaments.
- Mounted on a plastic base.
- Key card / Manual provided.



**XC-112**  
**Elbow Joint**

- Size: 12.5 × 12.5 × 32cm.
- Hinge joint.
- Life size, on stand
- Demonstrates flexion, extension, and internal/ external rotation of the radius.
- Includes flexible, artificial ligaments.



**ZX-S113A**  
**Foot Joint Model Flexible**

- Life size
- Made of PVC
- Accurate representation of the foot joint and its ligaments
- It is constructed with flexible plastic ligaments
- Mounted on a plastic base.
- Key card / Manual provided.



**XC-113A**  
**Life-Size Foot Joint with Ligaments**

- Demonstrate all of foot functionality and the external anatomical structures. Including flexible, artificial ligaments.
- Made of PVC plastic.
- Natural size.