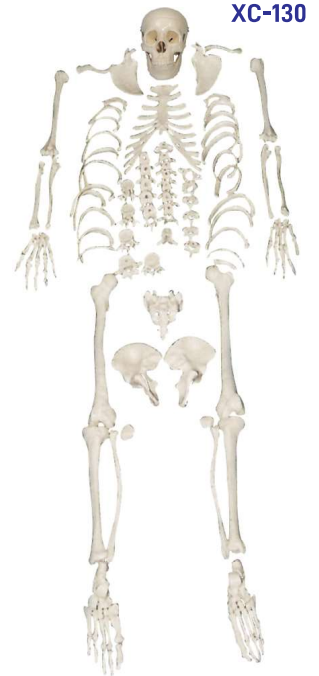




ZX-S130

## ZX-S130 Human Skeleton Disarticulated with Intervertebral Discs

- Life size
- Made of PVC
- Complete set of 201 pcs.
- Ideal for study of individual bones, as well as identification practice for students.
- Skull bonnet can be removed, Mandible is movable & all skull foramina, fissures, processes are well depicted.
- Teeth are separately installed, same as real one, in ceramic white color.
- Right hand and foot are articulated.
- Left hand and foot are disarticulated.
- All intervertebral discs provided.
- Hyoid bone, separate coccyx provided.
- Sacral canal clearly depicted.
- Instructional chart included.
- Key card / Manual provided.



XC-130

## XC-130 Disarticulated Skeleton

- Life size
- Made of PVC
- Set of 177 pcs.
- Students will learn various bones of an Adult Human.
- It is a visual aid for instructions of skeletal anatomy to students, doctors, nurses etc.



ZX-1224

## ZX-1224 Fetus Skeleton Model

- 40 cm tall
- Made of PVC
- 32 weeks old fetus skeleton
- Anatomically accurate
- Deluxe quality.
- Skull is removable
- Model is rigid with stand & base.
- Key card / Manual provided.



ZX-S103

## ZX-S103 Desktop Skeleton 45 cm

- 45 cm
- Made of PVC
- Features three part skull, bonnet can be removed, Mandible is movable & skull foramina, fissures, processes are well depicted. Vertebral column is fixed.
- Flexible arms and legs allow for realistic movement.
- Mounted on stand
- Key card / Manual provided.



ZX-1227

## ZX-1227 Tiny Skeleton, 21cm

- Size: 21 cm height
- Made of PVC
- Features three part skull, bonnet can be removed & all skull foramina, fissures, processes are well depicted. Vertebral column is fixed.
- Flexible arms and legs allow for realistic movement.
- Tiny version of human skeleton model.
- Erect on stand
- Key card / Manual provided.



SK046

## SK046 Mini Skeleton

- Detachable joints
- Durable Parts
- ABS Stand
- Size: 46 cm (18")
- Made of PVC