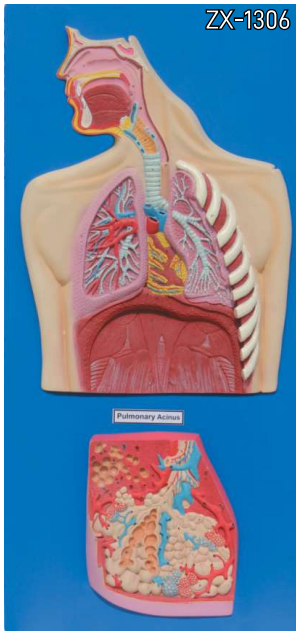


## RESPIRATORY SYSTEM

### ZX-1306 Human Respiratory System



- Size: 40x80 cm.
- Made of HSP resin.
- Well illustrated and informative.
- Upper half of the model displays nasal cavity, oral cavity, trachea, bronchia, bronchial tree in pulmonary lobe, right and left lungs cut open, heart in situ, pulmonary blood vessels and diaphragm with muscles attached to it.
- Lower half of the model shows enlarged pulmonary acinus displaying pulmonary alveoli, alveolar saccules, bronchial artery and veins and alveolar capillary network.
- Model is accurately made from actual specimen references, photographs and encyclopedia reference under expert guidance.
- Mounted on wooden sturdy base board.
- 38 features marked.
- Key card / Manual provided.

XC-302

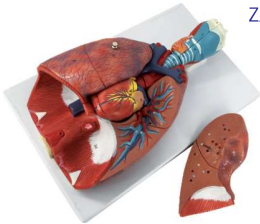


### XC-302 Pulmonary Alveoli Model Magnified

- Size: 26 x 15 x 35 cm
- Made of PVC plastic & mounted on plastic base.
- The model shows the small branches of principal bronchus:
  - Section of bronchiole of no cartilage.
  - The relation between pulmonary alveoli and terminal bronchiole.
  - The structure of alveolar sac and alveolar duct
  - The capillary rete in the alveolar septa.

ZX-S320PN

### ZX-S320PN Respiratory System Model 7 Parts PVC



- Life size
- Made of PVC
- Dissectable in 7 parts
- Showing the larynx (dissected along the sagittal plane), the lungs (dissected along the frontal plane) & a 2 parts heart.
- Mounted on base.
- 51 features marked.
- Key card / Manual provided.

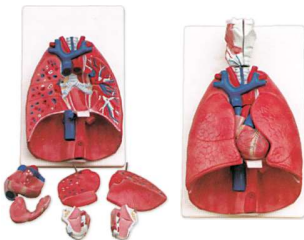
GD/A13013

### GD/A13013 Transparent Lung, Trachea & Bronchial tree with Heart



- The model consists of heart, great vessels (aorta, superior vena cava), tracheobronchial tree and mediastinum.
- 57 positions are displayed
- Size: 2/3 time of Life size, 27 x 22 x 19 cm.
- Material: Advanced PVC and paint.

### XC-320 Larynx, Heart and Lungs Model



- Life size, 36 x 23 x 12 cm
- Dissectable in 7 parts
- Made of PVC plastic

XC-330

### XC-330 Model of the Transparent Lung Segment



- Presents 10 segments in the right lung and 8 in the left. The distributions of the bronchial tree can be observed through the transparent lungs.
- Right lung: right upper lobe (3 segments), right middle lobe (2 segments), right inferior lobe (5 segments)
- Left lung: left upper lobe (4 segments), left inferior lobe (4 segments).
- Distribution of the bronchial tree: right bronchus, left bronchus.
- Hilus of lung. The lung made of transparent plastic. The trachea and bronchial tree is made of PVC.