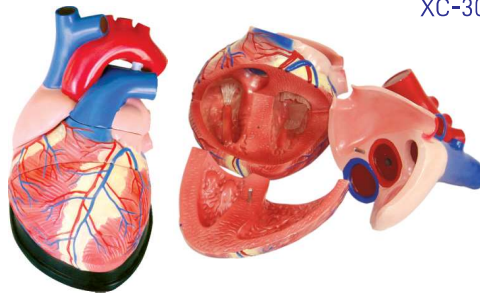


HART & CIRCULATORY SYSTEM



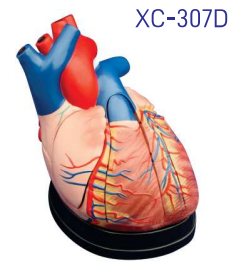
ZX-1405E Human Heart (7 Parts)

- 20x20x22 cm.
- Made of HSP resin
- Model is sectioned to expose ventricles, atria, and valves.
- Model also depicts blood vessels of heart and heart musculature in detail.
- 33 features marked.
- Key card / Manual provided.



XC-307 Jumbo Heart Model

- Size: 25 x 23 x 23 cm.
- Made of PVC plastic.
- Clear conception of routes of the systemic and pulmonary circulation.
- Dissectible into 3 parts. 4 times enlarged.



XC-307D Middle Heart Model

- This model shows external features and internal structures of heart and its relation between large blood vessels.
- Dissectible into 5 parts.
- 3 times enlarged.

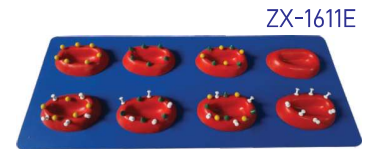


ZX-1500 Blocked Artery Model

- 12x8x4 cm.
- Made of HSP resin
- The model shows 4 stage cross section of narrowing of an artery due to build up of cholesterol and plaque.
- Four stages depict normal artery, fatty streak, fibrous plaque & blockage in order.
- All stages rotate on a hinge pin.
- 8 features marked.
- Key card / Manual provided.

ZX-1611E Blood Groups

- 60x25x6 cm.
- Made of soft PVC
- The model shows eight blood types ie. blood type A-/A+/B-/B+/AB-/AB+/O-/O+ (according to the presence or absence of antigens & Rh factor).
- Mounted on board.
- 12 features marked.
- Key card / Manual provided.



BRAIN & NERVOUS SYSTEM



ZX-1317PN Nervous System Model PVC

- Size: Half size
- Made of PVC
- Well illustrated and informative
- Beautifully painted in bright colors
- Model is accurately made from actual specimen references, photographs and encyclopedia reference under expert guidance
- Model is great teaching tool for anatomy lessons
- Mounted on base.
- 33 features marked.
- Key card / Manual provided.



ZX-1307 Human Nervous System

- Half life size
- Made of HSP resin
- Model is a schematic representation of the central and peripheral nervous system, including spinal nerves radiated from central nervous system to other parts of body.
- Mounted on wooden base board.
- 39 features marked.
- Key card / Manual provided.



ZX-1602 Neuron

- 30x20x12 cm
- Made of HSP resin.
- Motor neuron model in three-dimension.
- Model shows branching dendrites, myelin-wrapped axon and node of Ranvier.
- Removable axon section shows cytological ultra structure, layers of myelin sheath, neurolemma and schwann cell.
- 19 features marked.
- Key card / Manual provided.

GD/A18001 Neuron Model

GD/A18001



- Consists of 2 parts.
- Shows neuronal body and nerve fiber, neuronal axon hillock, dendritic arbor, neurofilament, etc.
- Shows 15 positions.
- Made of Advanced PVC.