

# BONES & SKELTON MODELS

## ZX-1202PN Skull Model Life size Painted-Numbered PVC

ZX-1202PN



- Life size
- Made of PVC
- Dissectable in 3 parts
- Muscle insertions and origins painted in blue and red respectively.
- Bonnet can be removed, Mandible is movable & all skull foramina, fissures, processes are well depicted
- Teeth are separately installed, same as real one, in ceramic white color.
- 48 features marked.
- Key card / Manual provided.

## ZX-1205 Skull Model Exploded 22 Parts

ZX-1205



- Life size
- Made of PVC
- Skull bones are mounted on pivoting spokes
- Each naturally colored and anatomically correct part features realistic texture & bony marks
- Semi-adjustable parts
- Key card / Manual provided.

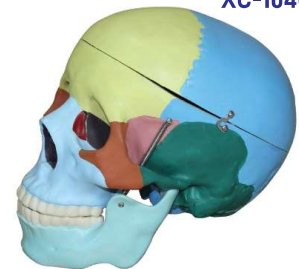
ZX-1208P

## ZX-1208P Didactic Human Skull 22 Parts



- Life size
- Made of PVC
- Consists of 22 parts.
- Suture of each bone is equipped with magnets to assemble easily. All the bones are depicted in different colours, making this model a useful tool to study the correct position and the relationship of all the structures.
- The 22 bones are depicted in 10 different didactic colors. Each pair of bone plates has the same color.
- Key card / Manual provided.

XC-104C



XC-104C

## Life Size Coloured Skull

- This is advanced model of XC-104 life-size skull, bones painted in different colors for precise study.
- Can be disassembled into 3 parts.

ZX-1229

ZX-1229

## Jumbo Dissection Model of Skull Base



- This replica of the human skull consists of many individual bones that gradually grow together as the development proceeds. All the bones/bone pairs are colored to make identification easier.

## ZX-1213PN Human Skull Model with Brain Numbered

ZX-1213PN



- Life size
- Made of PVC
- Dissectable in 3 parts and brain in 8 parts.
- Brain model sits nicely inside the skull, and can also be removed. The brain comes apart into the following pieces: Frontal and parietal lobes (2 parts), temporal and occipital lobes (2 parts), brain stem (2 parts), and cerebellum (2 parts).
- Both the brain and skull are held together with magnets and small pegs.
- Bonnet can be removed, Mandible is movable, Teeth are separately installed & all skull foramina, fissures, processes are well depicted.
- 32 features marked.
- Key card / Manual provided.

XC-104E



XC-104E

## Skull Model with 8 Parts Brain

- Includes 8 parts brain : frontal and parietal lobe, temporal and occipital lobe, encephalic trunk and cerebellum.