

# BONES & SKELTON MODELS

## ZX-1226A Knee Joint Model Deluxe with Muscles & Ligaments

ZX-1226A



- Life size (29 x 10 x 7.5 cm)
- Made of PVC
- Model represents a slightly flexible right knee joint with associated muscles, ligaments and meniscus.
- It shows fibular collateral, tibial collateral, anterior and posterior cruciate, and patellar ligament with patella.
- The extended femur and patellar ligament are connected to top section of the quadricep on this anatomical model.
- The model is constructed with somewhat rigid plastic ligaments.
- Mounted on display stand.
- Model is of superior quality with realistic texture and features and is very informative.
- Keycard / Manual provided.

## BONES & SKELETON MODELS

ZX-1225



## ZX-1225 Muscular Hip Joint Model

- Life size
- Made of PVC
- It is a realistic replica of hip joint muscles and ligaments.
- Mounted on a plastic base.
- Key card / Manual provided.

# JOINT SECTION MODELS

- Life size
- Made of PVC
- Mounted on a plastic base.
- Key card / Manual provided.
- Textures of the spongy and compact bone material, directional striations of the muscle, smooth ribbing of nerve bundles and the smooth lumpy fat areas can be felt over in great detail with this relief model.

ZX-1214P

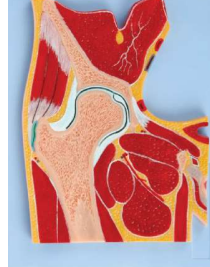


ZX-1214P

## Shoulder Joint Section Model

- Cross section of a human right shoulder.
- This cross section clearly shows the scapula, clavical, humerus and 1st-5th ribs, lateral cord, axillary artery, articular cartilage, deltoid, bicep, ligaments, fat, arteries, veins and dermis presented in one convenient model.

ZX-1215P



ZX-1215P

## Hip joint Section Model

- Cross section of a human right hip.
- This cross section clearly shows the bones, cartilage, muscles, tendons and dermis presented in one convenient model.

ZX-1216P



ZX-1216P

## Knee Joint Section Model

- Cross section of sagittal section of human knee joint.
- This cross section clearly shows the muscles, bones (including Femur, Tibia, and Patella), vasculature, ligaments, tendons and dermis presented in one convenient model.

ZX-1217P

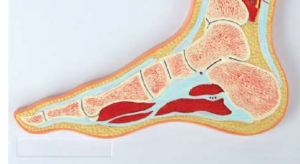


ZX-1217P

## Elbow Joint Section Model

- Cross section of a human elbow.
- This cross section clearly shows the humerus, radius, ulna, muscles and dermis presented in one convenient model.

ZX-1218P



ZX-1218P

## Foot Joint Section Model

- Price Rs. 4425.00
- Cross section of a human right foot/ankle.
- This cross section clearly shows the bones, cartilage, muscles, ligaments, vasculature, nerves and dermis presented in one convenient model.

ZX-1219P



## ZX-1219P Hand Joint Section Model

- Price Rs. 4425.00
- Cross section of a human right hand/wrist.
- This cross section clearly shows the bones, cartilage, muscles, tendons and dermis presented in one convenient model.