

HUMAN PELVIS

ZX-S123



ZX-S123

Male Pelvis Bone Model

- Life size
- Made of PVC
- Easy to study the structures and features of the hip, sacrum, coccyx & pubic symphysis.
- Separate coccyx.
- Sacral canal clearly depicted.
- Key card / Manual provided.

XC-123



XC-123 Adult Male Pelvis

- Natural size.
- Made of PVC plastic.

XC-124



XC-124 Adult Female Pelvis

- Natural size.
- Made of PVC plastic.

XC-125



XC-125 Female Pelvic Muscles and Organs

- Natural size.
- Made of PVC plastic.

ZX-S124

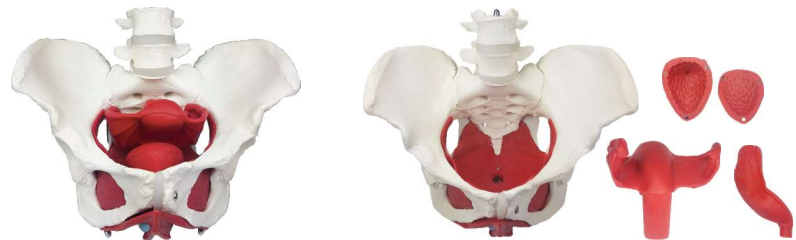


ZX-S124

Female Pelvis Bone Model

- Life size
- Made of PVC
- Easy to study the structures and features of the hip, sacrum, coccyx & pubic symphysis.
- Sacral canal clearly depicted.
- Key card / Manual provided.

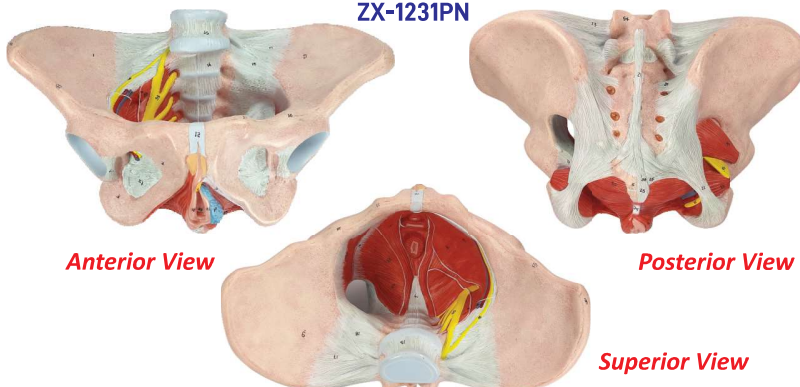
ZX-1233



ZX-1233 Female Pelvic Muscles with Removable Genitals

- Life size
- Made of PVC
- Female Pelvic Muscles with Removable Genitals.
- The model comes apart into 5 different pieces. The uterus with ovaries, rectum and 2 part bladder can be easily removed.
- Two lower lumbar vertebra L4 and L5 are also shown.
- This will be a great addition to gynecological studies for students, people involved in health education and for physicians during patient consultation.
- Key card / Manual provided.

ZX-1231PN



Anterior View

Posterior View

Superior View

ZX-1231PN Female Pelvis Model, Deluxe

- Life size
- Made of PVC
- It shows the external and internal genital elements of the pelvis with Sacroiliac Ligaments, muscles of pelvic floor as well as the network of sacral nerves and vessels.
- This model is a great learning tool for understanding a female skeletal system. Also, this model is great for explaining nerve pain, muscle strains and ligament damage.
- 64 parts labeled in total.
- Key card / Manual provided.