

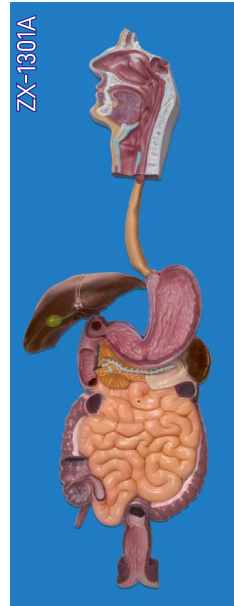
## DIGESTIVE SYSTEM

### ZX-1311PN Digestive System Model PVC



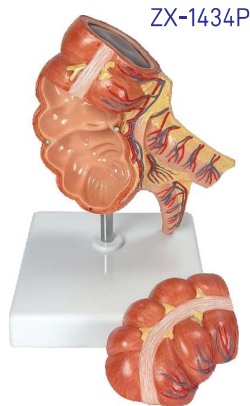
- Life size
- Made of PVC
- Dissectable in 2 parts.
- The oral cavity, the pharynx and the first part of the esophagus are dissected along the medial sagittal plane. The liver is shown together with the gall bladder and the pancreas is dissected. The Stomach is open along the frontal plane; the duodenum, caecum, part of the small intestine and the rectum are open to expose the interior. The transverse colon is removable. The relief model of the head shows the anatomy of the mouth with salivary glands.
- Mounted on base.
- 51 features marked.
- Key card / Manual provided.

### ZX-1301A Human Digestive System



- Life size
- Made of HSP resin
- Relief model of human digestive system in median section dissectible into 3 parts.
- Duodenum, caecum and rectum are opened. Rectum is unfolded.
- Transverse colon and front half of the stomach are removable.
- The model features the oral cavity, pharynx, esophagus, stomach, liver with gall bladder, pancreas, GI tract and spleen.
- Mounted on sturdy wooden base.
- 56 features marked.
- Key card / Manual provided.

### ZX-1434P Caecum and Appendix, Enlarged



- Size: 1.5 times enlarged
- Made of PVC
- Dissectable in 2 parts
- Mounted on display stand
- Extensive detailing of the caecum & appendix, location and attachment of the appendix to the large intestine demonstrated.
- Model can be opened to explore large intestine, with accurate depiction of the folds and texture of the internal anatomy.
- The removable portion of the model is secured with magnets.
- Model can be removed for greater inspection & demonstration.
- Key card / Manual provided.

### ZX-1514P Rectum Pathologies Model

- Size: 22x12.5x11cm
- Made of PVC
- Mounted on display stand
- The model displays various pathological conditions of the rectum and anus which includes ulcerative colitis, internal & external fistula, internal & external hemorrhoids, annular cancer, sessile polyp, submucosal abscess, skin tag, pedunculated polyp, supraleator abscess, ischiorectal abscess, cryptitis, diverticulum, condyloma acuminatum, fissure and condyloma latum.
- Key card / Manual provided.



### ZX-1606

### ZX-1606 Intestinal Villi



- 31x20x43 cm.
- Made of HSP resin.
- Highly enlarged 3D replica model of small intestine shows one entire villus, one sectioned villus with arterioles and venules and one sectioned villus with lymphatic vessels. The model also shows different muscle layers in section.
- Mounted on sturdy wooden base.
- 17 features marked.
- Key card / Manual provided.

### GD/A12006

### GD/A12006 Appendix and Caecum



- Made of advanced PVC.
- Mounted on a stand.
- Natural size.
- Shows wall of the caecum & appendix.
- Separated into 2 parts.
- Shows 17 positions.