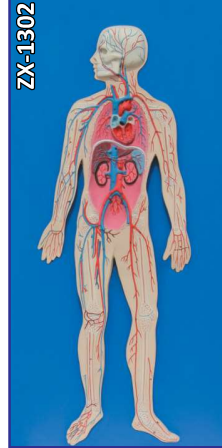


HEART & CIRCULATORY SYSTEM



ZX-1312PN
Circulatory System Model PVC

- Size : Half life Size • Made of PVC
- This model is a half life-size relief model which includes a 2 part removable heart and exceptional details.
- Following anatomical structures are in detail: The arterial/venous system, the heart, the lungs, the liver, the spleen, kidneys, and a partial skeleton.
- Mounted on base. •70 features marked.
- Key card / Manual provided.



ZX-1302
Human Circulatory System

- Half life size • Made of HSP resin
- Model shows following anatomical structures : Arterial and venous system, Heart showing chambers, Liver, Spleen, Lung, Kidneys, Partial skeleton.
- Mounted on wooden base.
- 81 features marked.
- Key card / Manual provided.



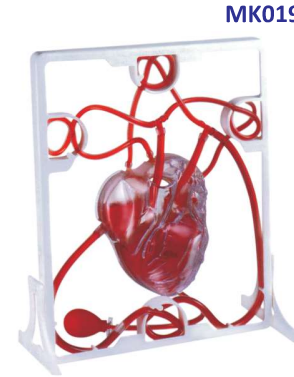
ZX-1509P
Hypertension Model

- Made of PVC
- It shows organs (Brain, Eye, Heart, Kidney, Adrenal gland & Artery) related with hypertension.



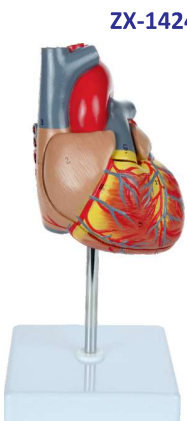
ZX-1308E **Fetal Circulation**

- 61 x 46 x 7 cm • Made of HSP resin
- Model shows foetal heart, lungs, liver, placenta with cord, aorta & vena cava and is marked to show circulation & direction of blood flow.
- Mounted on sturdy wooden base.
- 24 features marked.
- Key card / Manual provided.



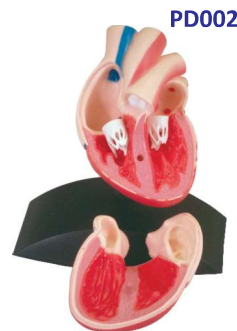
MK019
MK019 Pumping Heart

- A 3-D working plastic heart model with clear chambers. Squeeze bulb pumps simulated blood through clear heart chambers just like real one.
- Complete heart model with display stand.
- Complete instruction manual, easy to assemble.



ZX-1424PN
Heart Model Deluxe Life Size 2 Parts

- Life size • Made of PVC
- Dissectable in 2 parts
- Model parts held together with hidden magnets.
- The front wall of the heart can be removed and replaced easily, allowing for easy study of the internal structures of the heart.
- Mounted on stand
- 34 features marked.
- Key card / Manual provided.



PD002
Heart Model

- Full size
- Durable ABS base
- Detachable cover piece.
- Highly realistic decoration.