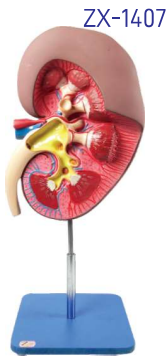
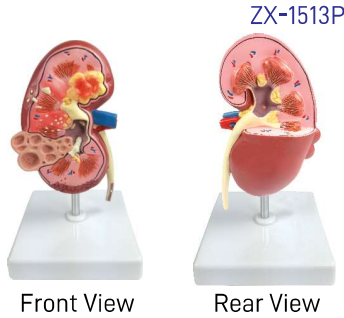


EXCRETORY SYSTEM



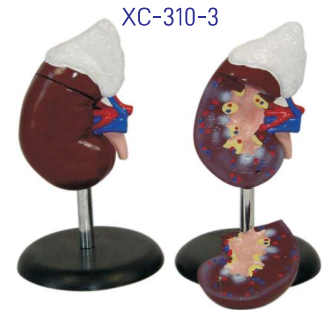
ZX-1407 Kidney

- Size: 3 times of life size.
- Made of HSP resin
- Model shows a longitudinal section of the left kidney.
- Mounted on stand.
- 31 features marked.
- Key card / Manual provided.



ZX-1513P Kidney Pathologies Model

- Size: 15x9x3 cm.
- This kidney model shows pathological complications of a kidney like infection, scarring, atrophy, urinary (kidney) stones, tumors, polycystic disease and hypertension on one side.
- The other side shows a normal kidney features.
- Mounted on base.
- Key card / Manual provided.



XC-310-3 Human Kidney with Adrenal Gland

- Life-size model features the kidney, adrenal gland, renal and adrenal vessels & upper portion of the ureter.
- Dissectible into 2 parts to reveal the cortex medulla, cortex vessels and renal pelvis.
- Model can be removed from the stand for instruction and patient education.
- Size: 12.5 x 12.5 x 20 cm.

REPRODUCTIVE SYSTEM



ZX-1304 Human Reproductive System Male

- 40x80 cm.
- Made of HSP resin
- Upper half part shows median section of the system.
- Internal organs (accessory organs) shown in great detail are epididymis, vas deferens, ejaculatory ducts, urethra, seminal vesicles, prostate gland and bulbourethral gland.
- External structures shown are penis, scrotum and testicles.
- Lower half shows the model of scrotum and contents alongwith the penis.
- 41 features marked.
- Key card / Manual provided.



ZX-1305 Human Reproductive System Female

- 40x80 cm.
- Made of HSP resin
- Upper half model shows both ovaries, left ovary in section, fallopian tubes with fimbriae, uterus, cut open vagina to show vaginal folds and cervix, bladder with cut open urethra, labia and rectum.
- Lower half model shows adnexa of uterus.
- 56 features marked.
- Key card / Manual provided.

ZX-1417PN Male Pelvis Section Diss. PVC



ZX-1417PN

- Life size
- Made of PVC
- Dissectable in 4 parts
- Open through the medial sagittal section of male pelvis, this model shows the internal organs of urinary, male reproductive system and muscular anatomy
- Mounted on base.
- 26 features marked.
- Key card / Manual provided.

ZX-1418PN Female Pelvis Section Diss. PVC



ZX-1418PN

- Life size
- Made of PVC
- Dissectable in 3 parts
- This model shows the urinary and female reproduction system along with muscular anatomy
- Half of the pelvis is shown, along with a removable attachment to see the outer reproductive organs
- Mounted on base.
- 27 features marked.
- Key card / Manual provided.