

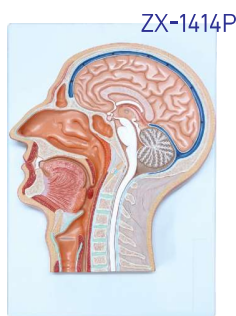
# HUMAN TORSO MODEL



ZX-1433PN Sliced Head Model, 12 Slices

- Life size
- Made of PVC
- Dissectable in 12 parts.
- 243 parts labeled in total.
- Beautifully painted in bright colors.
- Model is accurately made from actual specimen references, photographs and encyclopedia reference under expert guidance.
- Model is great teaching tool for anatomy lessons.
- Model gives idea about computer tomography and magnetic resonance view of section.
- Each slice can be rotated & removed for closer study.
- Key card / Manual provided.

ZX-1414P Human Head Model Sagittal Section



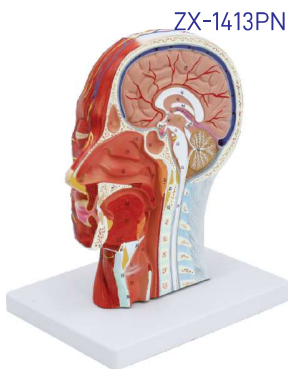
- 33x23x5 cm
- Made of PVC
- This extremely elaborate model shows the structure of the brain, spinal cord, nasal cavity, oral cavity and larynx.
- Mounted on base.
- Key card / Manual provided.

ZX-1409E Head, Brain and Eye



- Life size
- Made of HSP resin
- Model is in 4 parts with 2 parts brain and eye with optic nerve.
- Model shows natural position of nose, mouth cavity, pharynx, occiput & skull base.
- Mounted on board.
- 85 features marked.
- Key card / Manual provided.

ZX-1413PN Half Head Model with Nerves & Vessels



- Life size
- Made of PVC
- Model shows the right half of the adult human head and neck, sectioned along the sagittal plane.
- A superficial dissection exposes the facial muscles, the superficial blood vessels and nerve branches of the face and scalp, the parotid and submandibular glands.
- A median dissection expose the brain with its internal structure, the pharynx and upper respiratory tract, a section of the cervical vertebrae.
- 81 features marked.
- Key card / Manual provided.

GD/A18212



ZX-1432PN Head, Brain & Neck with Muscles



- Life size
- Made of PVC
- Mounted on stand.
- Dissectable in 10 parts.
- 115 parts labeled in total.
- Removable parts include the eye, calvarium and brain.
- All important anatomical structures of the human head are depicted in detail.
- Model represent superficial musculature & deep muscles, nerves & vessels.
- Key card / Manual provided.

GD/A18212

Head and Neck with Blood Vessels, Nerves and Brain

- Separated into 19 parts such as: *Mimic muscular system with the deep-set muscles, Left temporomaxillary articulation, Sternoideomastoid muscle, Carotid trigone, Trapezium Muscle, Pectoral major muscle, Deltoid Muscle, Clavicle, Eyes with muscle and nerves, Cranium, Brain with arteries*
- 190 positions are displayed