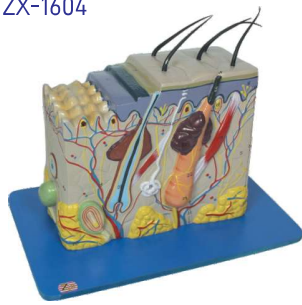


SKIN

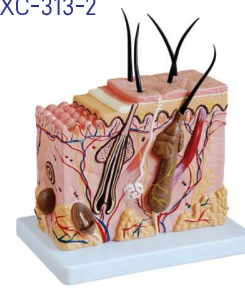
ZX-1604



ZX-1604 Skin Model

- 21x10x25 cm.
- Made of HSP resin
- Model shows 3-D section of human skin.
- The model represents differentiated skin layers, hair, sweat glands, sebaceous glands, blood vessels, nerves and receptors for detailed examination.
- Mounted on sturdy wooden board for easy display.
- 35 features marked.
- Key card / Manual provided.

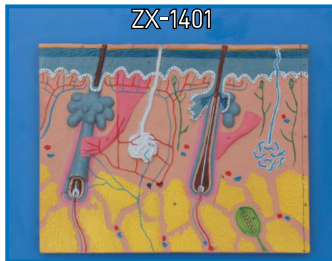
XC-313-2



XC-313-2
Skin Block Model

- This model shows a section of human skin in three dimensional forms. Hair, sebaceous and sweat glands, receptors, nerves and vessels are shown in detail. 70 time enlarged.

ZX-1401



ZX-1401 Human Skin

- 30x35 cm
- Made of HSP resin
- The skin relief model of a skin section of the head.
- Skin section portrays the anatomy of the skin at 70 times life size and shows:- Representation of hair follicles with sebaceous glands, Sweat glands, Receptors, Nerves, Blood Vessels, Different layers of the skin.
- Mounted on sturdy wooden base.
- 31 features marked.
- Key card / Manual provided.

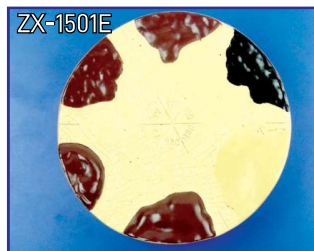
XC-313



XC-313 Skin Model Enlarged

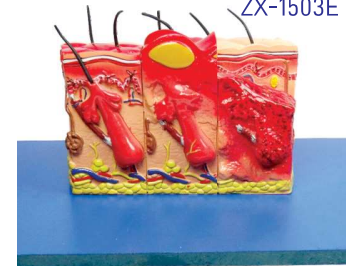
- A greatly enlarged (105 times) cross sectional view of the human skin showing three layers-epidermis, dermis, hypodermis, structures of the human scalp and a close-up view of a hair follicle, sweat gland, fatty tissue, sebaceous gland, blood vessels & nerves. Front, side and back view.
- Mounted on a plastic base.
- Size: 27 × 10 × 31 cm.

ZX-1501E Skin Cancer



- Size : 15x15x6 cm.
- Made of HSP resin
- This skin cancer model shows three cancerous conditions : NBC (Nodular Basal Cell), MMC (Malignant Melanoma), MBC (Morpheic Board Cell), and three non cancerous conditions : DN (Dyplastic Nevi), KAC (Keratoa conthoma), AK (Aetinic Keratosis) with basal layer and dermal layer cross-section detail.
- Mounted on wooden base.
- 9 features marked.
- Key card / Manual provided.

ZX-1503E



ZX-1503E Skin Burn

- 20x15x12 cm.
- Made of HSP resin
- The model is two sided. One side shows normal skin anatomy.
- The other side shows 1st, 2nd and 3rd degree burns.
- 75 times enlarged.
- Mounted on wooden base.
- 20 features marked.
- Key card / Manual provided.

ZX-1502E



ZX-1502E Skin Acne

- 15x15x13 cm.
- Made of HSP resin
- Enlarged cross-section model of skin shows acne pustule (pimple) and open comedo (black head).
- The model also shows normal skin with relevant details.
- Mounted on wooden base.
- 19 features marked.
- Key card / Manual provided.