

DIGESTIVE SYSTEM

ZX-1605 Alimentary Canal Wall Model (complete set of 8)

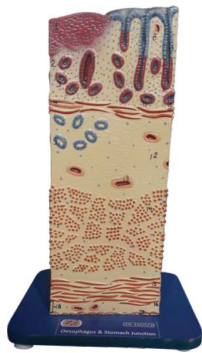
Model is highly magnified to show histological section fine tissues and structures
It is made of advanced HSP resin. Mounted on sturdy wooden base. Key card provided with each model.



ZX-1605/1

ZX-1605/1
Oesophagus Wall

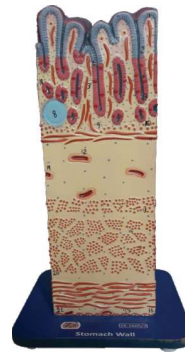
- 16 x 16 x 26 cm.
- 14 features marked.



ZX-1605/2

ZX-1605/2 Oesophagus & Stomach Junction

- 16 x 16 x 26 cm.
- 18 features marked.



ZX-1605/3

ZX-1605/3
Stomach Wall

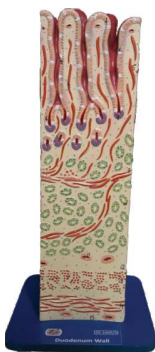
- 16 x 16 x 28 cm.
- 21 features marked.



ZX-1605/4

ZX-1605/4 Stomach & Duodenum Junction

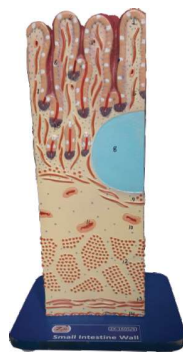
- 16 x 16 x 38 cm.
- 17 features marked.



ZX-1605/5

ZX-1605/5
Duodenum Wall

- 16 x 16 x 33 cm.
- 15 features marked.



ZX-1605/6

ZX-1605/6
Small Intestine Wall

- 16 x 16 x 28 cm.
- 15 features marked.



ZX-1605/7

ZX-1605/7
Large Intestine Wall

- 16 x 16 x 26 cm.
- 15 features marked.



ZX-1605/8

ZX-1605/8
Rectum Wall

- 16 x 16 x 21 cm.
- 11 features marked.

ZX-1507P Diabetes Model

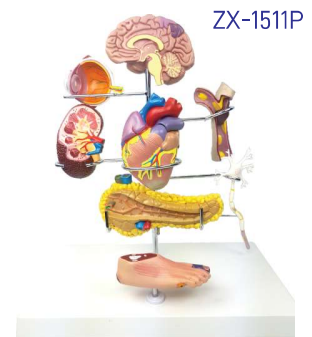


ZX-1507P

- Made of PVC
- The Set includes a miniature brain, eye, heart, kidney, artery, foot, pancreas & neuron models. Illustrates the effects associated with diabetes: ocular pathologies, cardiovascular disease, neuropathy, diabetic foot, arterial plaque, kidney failure and stroke.

ZX-1511P Diabetes Mellitus Complications Model

- Made of PVC
- It shows the effects of diabetes on brain, eye, heart, kidney, artery, pancreas, neuron and foot.
- It illustrates effects associated with diabetes: stroke, non-inflammatory disease of retina, heart disease, hardening of kidney, hardening of arteries, insulin resistance, neuropathy & foot ulcerations.
- Easy to remove & assemble the different parts on the stand given.
- Key card / Manual provided.



ZX-1511P