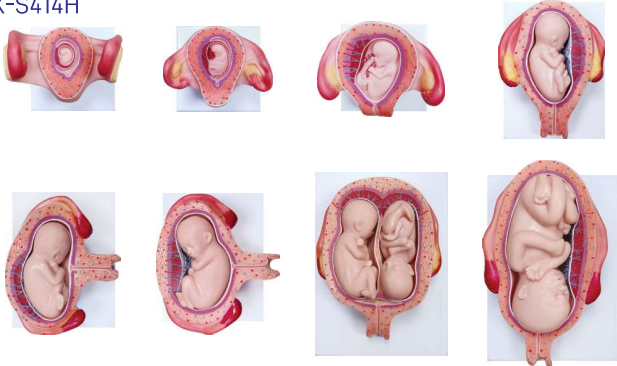


# GYNAE & OBSTETRIC MODELS

ZX-S414H



ZX-S414H Fetal Development Model set of 8

- Made of PVC
- Each model mounted on separate base.
- Shows the development from ovum to the fetus in 7th month.

A: 1st Month Embryo  
 B: 2nd Month Embryo  
 C: 3rd Month Embryo  
 D: 4th Month Foetus  
 (Breech Position)

(Transverse Lie)  
 E-II: 5th Month Foetus (Transverse Lie)  
 E-III: 5th Month Twin Foetuses (Normal Position)  
 F: 7th Month Foetus

E-I: 5th Month Foetus  
 • Key card / Manual provided.

ZX-1709



ZX-1709  
 Gestation Month Fifth

- Life size
- Mounted on board

ZX-1710



ZX-1710  
 Gestation Month Seventh

- Life size
- Mounted on board

ZX-1704



ZX-1704  
 Child Birth Demonstration Model

- Size: Life size
- Made of PVC
- Three individual models display childbirth in 3 stages of labor.
- First model shows first (dilation) stage of labor.
- Second model shows second (birth) stage of labor.
- Third model shows third (afterbirth) stage of labor.
- Each labor stage model shows major parts including pelvis, uterus, placenta with umbilical cord and fetus.
- Each model is dissectable in 3 parts
- 44 features marked.
- Key card / Manual provided.

ZX-S127



ZX-S127  
 Birth Demonstration Model

- Size: Life size
- Made of PVC
- It designed for teaching the act of birth.
- It consists of female pelvis with fetal skull.
- Key card / Manual provided.

## STERTCHER

