

EXCRETORY SYSTEM

XC-331



XC-331
Male Urogenital System

- This is intended for schools as a visual aid in teaching physiology and hygiene to help the students to understand the external features of the urogenital system of the kidney, urinary bladder, penis and testicle.
- Made of PVC Plastic.
- Size 20 x 20 x 50 cm.

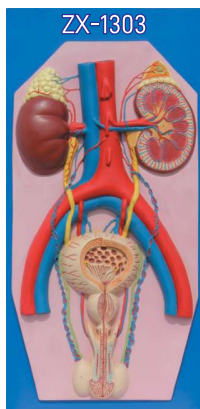
XC-332



XC-332
Female Urogenital System

- This model serves as a teaching model for teachers to teach the female urogenital system. The model shows kidney, ureters, urinary bladder, uterus, accessories of uterus, vagina, ovary membrane, ligaments, uterus ligament and its artery etc.
- Made of PVC plastic.
- Size 20 x 20 x 50 cm.

ZX-1303 Human Excretory System

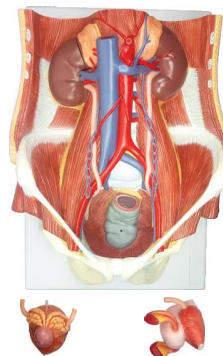


- 40x80 cm
- Made of HSP resin
- Delivered on wooden baseboard for easy display.
- It shows the structures of the retroperitoneal cavity which includes : descending aorta, inferior vena cava, renal veins and arteries, ureter, urinary bladder cut open to show trigone and other structures, adrenal glands, both kidneys, iliac vessels and prostate gland.
- Left kidney and left adrenal gland in section.
- Model also shows testis and penis in section.
- The model has anatomical details that makes it a great teaching aid.
- 36 features marked.
- Key card / Manual provided.

ZX-S333P

Urinary System Block Model Dual Sex, 6 Parts

ZX-S333P



- Life Size
- Made of PVC
- Mounted on stand.
- Dual sex
- It shows components of urinary system, posterior abdomen wall, kidney, adrenal gland & bladder.
- It also shows pelvic bone and muscles, Inferior vena cava, aorta with its branches including iliac vessels and Rectum.
- One front half of a kidney is removable
- Key card / Manual provided.

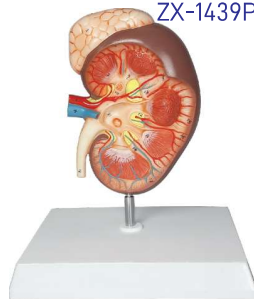
XC-333



XC-333 Urinary System Model

- The Model shows the structures of retroperitoneal cavity, pelvis with bones and muscles, inferior venacava, aorta with its branches, upper urinary tract, kidney with adrenal gland, ureter, bladder, etc.
- Dissectible into 4 parts.

ZX-1439PN



ZX-1439PN Kidney with Adrenal Gland, Enlarged

- Size : 2 times enlarged
- Made of PVC
- Mounted on stand.
- Kidney with adrenal gland and portion of the ureter, is open to expose its internal anatomy showing the cortex, medulla, major & minor calyces, renal columns, and the renal artery & vein.
- Model fully rotates on base or can be removed from stand for hands on study.
- 17 features marked.
- Key card / Manual provided.

ZX-1603



Front View

Back View

ZX-1603 Kidney Microstructure

- 30x20x24 cm
- Made of HSP resin
- Beautifully painted in advanced colours.
- A complete 3-D model shows 5 sides view of following structures in great details : kidney in section, parenchyma of kidney and nephron, renal corpuscle and associated structures, loop of henle and associated structures.
- Mounted on sturdy wooden base.
- 45 features marked.
- Key card / Manual provided.